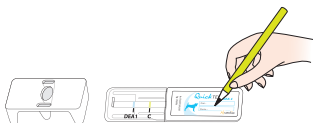
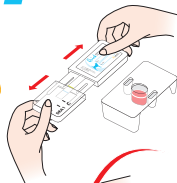


# QuickTEST<sub>DEA 1</sub>

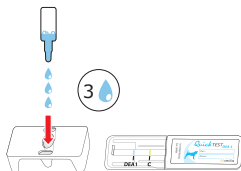
1



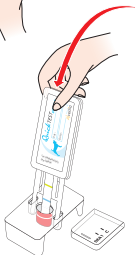
5



2



6



3



Packed Red Blood cells  
Or whole blood

- EDTA
- ACD
- CPD

Do not use Heparin

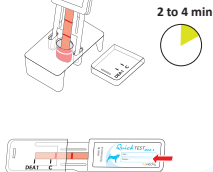
7

Wait until  
complete  
migration

4



8



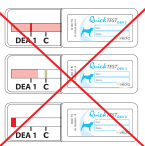
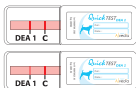
Read immediately after testing



C = control



Weak DEA 1 line



Contact us to ask for the  
«Troubleshooting procedure»