

# QuickTEST<sub>A+B</sub>

1



2



3

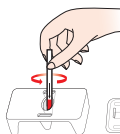
3



10 µL

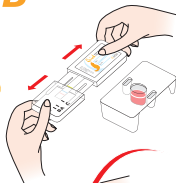
- EDTA
  - ACD
  - whole blood
  - umbilical cord blood
- Do not use Heparin

4

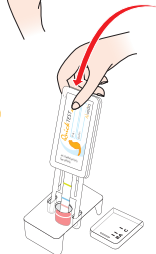


7 sec

5



6



7



Wait until  
complete  
migration  
2 to 4 min

8



Read immediately after testing

A



B



AB



Contact us

C = control

